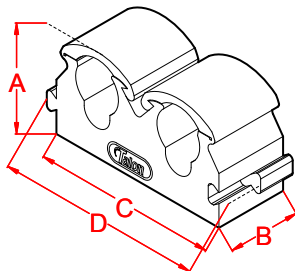


Code: TS10
10 mm
Hinged Clip

DIM A = 21.4 mm
DIM B = 15 mm
DIM C = 19 mm
DIM D = 23.5 mm

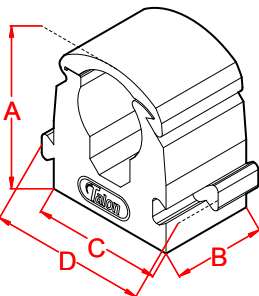
Compatible with size
6 countersunk screw



Code: TD10
10 mm Double Hinged
Clip

DIM A = 21.4 mm
DIM B = 15 mm
DIM C = 38 mm
DIM D = 42.5 mm

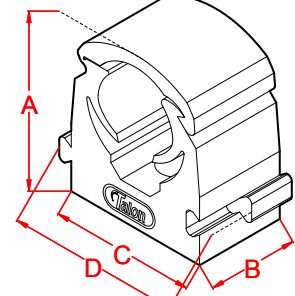
Compatible with size
6 countersunk screw



Code: TS12
12 mm
Hinged Clip

DIM A = 25.3 mm
DIM B = 15 mm
DIM C = 21 mm
DIM D = 25.5 mm

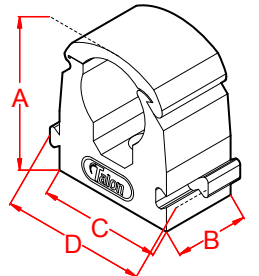
Compatible with size
6 countersunk screw



Code: TS14
12.7-14 mm
Hinged Clip

DIM A = 28.1 mm
DIM B = 15 mm
DIM C = 24 mm
DIM D = 28.5 mm

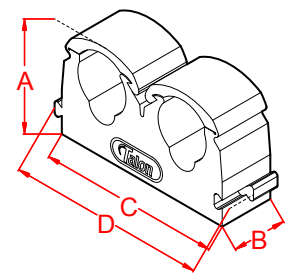
Compatible with size
10 countersunk screw



Code: TS15
15 mm
Hinged Clip

DIM A = 30 mm
DIM B = 15 mm
DIM C = 25 mm
DIM D = 29.5 mm

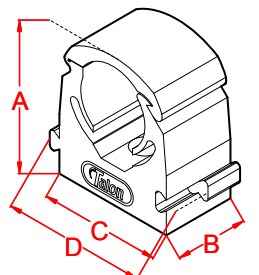
Compatible with size
10 countersunk screw



Code: TD15
15 mm Double Hinged
Clip

DIM A = 30 mm
DIM B = 15 mm
DIM C = 50 mm
DIM D = 54.5 mm

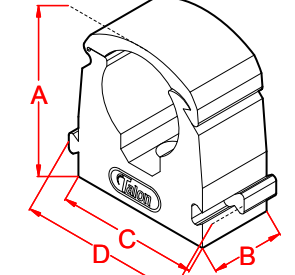
Compatible with size
10 countersunk screw



Code: TS16
16 mm
Hinged Clip

DIM A = 30 mm
DIM B = 15 mm
DIM C = 25 mm
DIM D = 29.5 mm

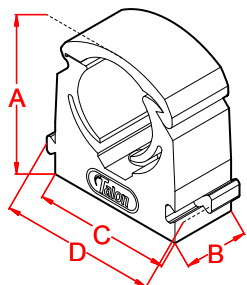
Compatible with size
10 countersunk screw



Code: TS18
18 mm
Hinged Clip

DIM A = 33.5 mm
DIM B = 15 mm
DIM C = 29 mm
DIM D = 33.5 mm

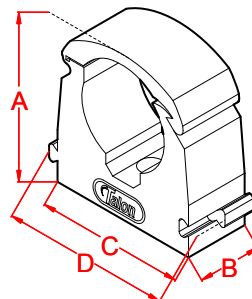
Compatible with size
10 countersunk screw



Code: TS20
19-21 mm
Hinged Clip

DIM A = 35.85 mm
DIM B = 15 mm
DIM C = 32 mm
DIM D = 36.5 mm

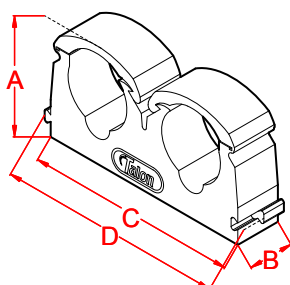
Compatible with size
10 countersunk screw



Code: TS22
22 mm
Hinged Clip

DIM A = 38.2 mm
DIM B = 15 mm
DIM C = 35 mm
DIM D = 39.5 mm

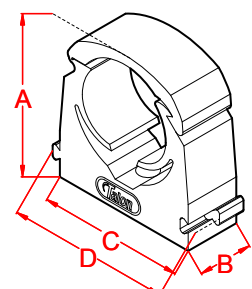
Compatible with size
10 countersunk screw



Code: TD22
22 mm Double Hinged
Clip

DIM A = 38.2 mm
DIM B = 15 mm
DIM C = 70 mm
DIM D = 74.5 mm

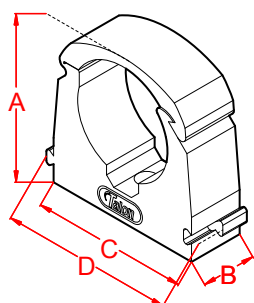
Compatible with size
10 countersunk screw



Code: TS25
25-27.4 mm
Hinged Clip

DIM A = 43 mm
DIM B = 15 mm
DIM C = 40 mm
DIM D = 44.5 mm

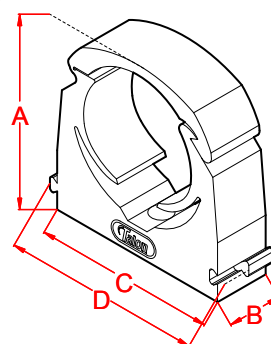
Compatible with size
10 countersunk screw



Code: TS28
28 mm
Hinged Clip

DIM A = 44.5 mm
DIM B = 15 mm
DIM C = 43 mm
DIM D = 47.5 mm

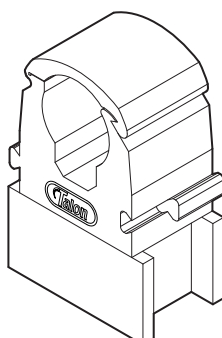
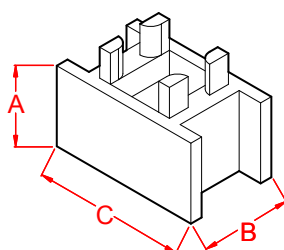
Compatible with size
10 countersunk screw



Code: TS35
31.8-35 mm
Hinged Clip

DIM A = 51.65 mm
DIM B = 15 mm
DIM C = 50 mm
DIM D = 54.5 mm

Compatible with size
10 countersunk screw



Code: TSP1

Spacer for Talon Hinged & Open Clips

DIM A (wall clearance) = 13 mm
DIM B = 15 mm
DIM C = 25 mm

Install fixing in clip and fit through the spacer

International Plumbing Pipe Sizes

Product Code	All sizes are the overall outside diameter of the pipe				
	Pipe Size (English) in mm	Pipe Size (Irish) in mm	Pipe Size (USA) in inches	Pipe Size (AUS) in mm	Pipe Size (NZ) in mm
TS10	10	-	-	-	-
TS12	12	-	-	-	-
TS14	12.7 - 14	-	1/2	12.7 (DN15)	-
TS15	15	-	-	-	-
TS16	15 - 16	-	5/8	15.9 (DN18)	-
TS18	18	-	-	-	-
TS20	19 - 21	21	3/4	19.1 (DN20)	21.08
TS22	22	-	7/8	-	-
TS25	25 - 27.4	27.4	-	25.4 (DN25)	27.43
TS28	28 - 28.6	-	1 1/8	-	-
TS35	32 - 35	34	1 3/8	31.8 (DN32)	34.19
TD10	10	-	-	-	-
TD15	15	-	-	-	-
TD22	22	-	7/8	-	-

Talon Clips are supplied in Polypropylene as standard. If Nylon is required it must be requested.

Maximum safe operating temperature for plumbing / gas pipe installations (Polypropylene clips): **65 °C**
Suitable for hot water pipe in domestic plumbing applications.

Maximum safe operating temperature for plumbing / gas pipe installations (Nylon clips): **100 °C**

Fire Safety: Polypropylene for Talon Clips is tested to **H-B** fire rating / UL94 Standard (horizontal burn).
Nylon for Talon Clips is tested to **V-2** fire rating / UL94 Standard (vertical burn).

Standard colour: Natural polymer (no added colouring)

Fixing size:

Size 6 countersunk screw (UK size)	=	TS10 to TS12 / TD10	=	4 mm hole
Size 10 countersunk screw (UK size)	=	TS14 to TS28 / TD15 to TD22	=	5.5 mm hole
Size 10 countersunk screw (UK size)	=	TS35	=	6 mm hole

Clip spacing: The preferred spacing between Clips installed along a length of pipe is 500 mm.

Load bearing applications: Talon Hinged Clips are tested for safe use with plumbing, gas and air conditioning pipe. However, hinged clips are not intended for load bearing applications. Clips are designed to grip and hold specified pipe sizes only. A series of clips spaced at 500 mm intervals along a pipe installation will easily hold the natural weight of copper or plastic pipe work. For safety considerations please do not attach or hang loads to the pipe installation as this may cause clips to fail.

The effective usage a Talon Hinged Clip depends greatly on the fixing surface, type of fixing and cavity plug (if required) used for the installation. Please ensure the screw size and type are correct and the length of the fixing is long enough to maintain hold of the fixing surface, clip, and perform as intended. The specified pullout resistance rating of any cavity plug and screw fixing must be sufficient to hold the clip in place to enable safe use of the hinged clip.