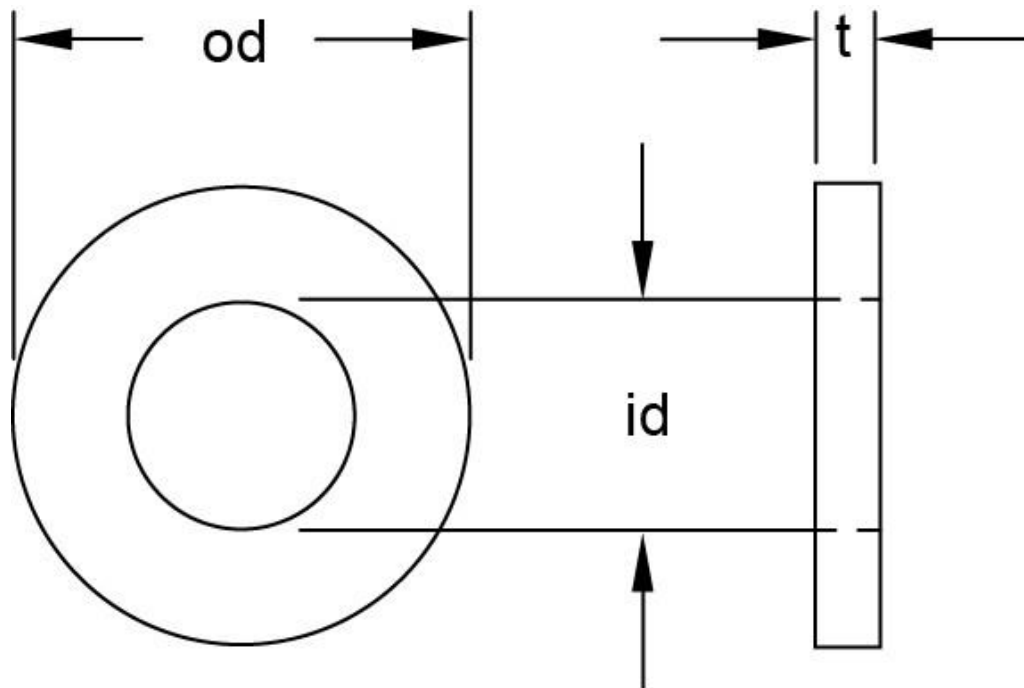


MUDWING/REPAIR WASHERS

Mudwing or repair washers are used to spread the load of bolts or screws when used in soft material or to repair oversize holes. Available in a variety of outside diameters to suit different jobs.

Available in mild steel, mild steel zinc plated and Stainless Steel Grade A2 & A4



id Nom.	t	od
M4	1.50mm	20,25,30
M5	1.50mm	20,25,30,40
M6	1.50mm	20,25,30,40,50
M8	1.50mm	25,30,40,50
M10	1.50mm	25,30,40,50
M12	1.50mm	40,50