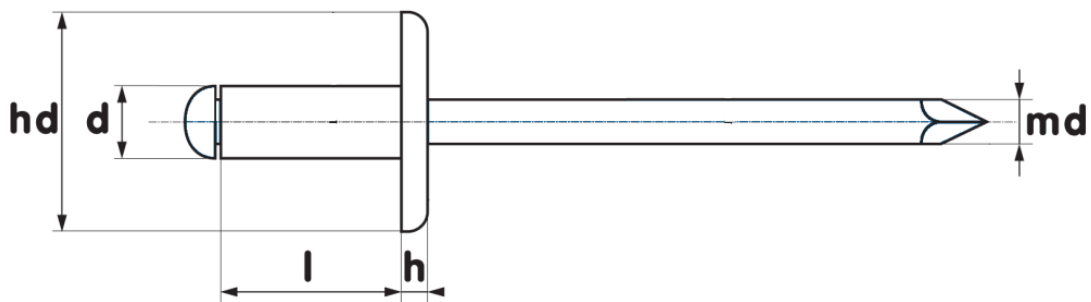


Blind Rivet Large Flange Dome Head

Aluminium Body/ Steel Mandrel



d mm	Drill Dia. mm	hd mm	h mm	md mm	l Lengths mm
3.20	3.30	9.50	1.10	1.80	6-16
4.00	4.10	12.00	2.20	2.20	8-20
4.80	4.90	14.00	2.65	2.65	10-50
4.80	4.90	16.00	2.65	2.65	10-35
4.80	4.90	19.00	2.65	2.65	25-30
5.00	4.90	11.00	2.65	2.65	8-30
5.00	5.10	14.00	2.65	2.65	8-30
6.40	6.50	15.00			10-12

Body: Aluminium Al Mg 3.5

Mandrel: Steel Zinc Plated A1K